

# SAFETY ADVISORY

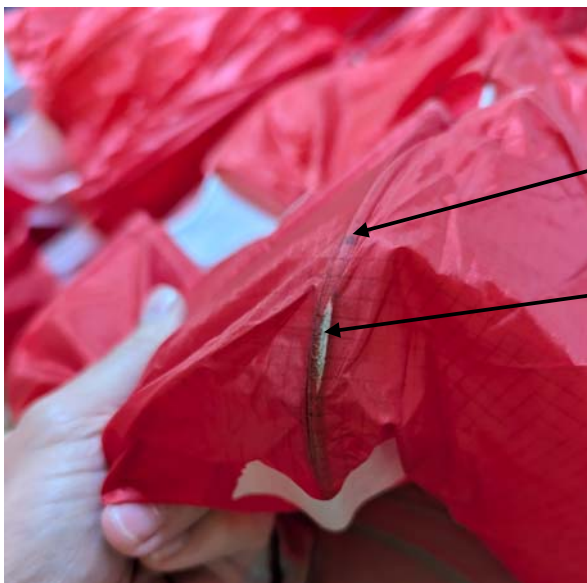
Issued by Angus Pinkerton, Chairman of the Flying & Safety Committee. 28<sup>th</sup> August 2024.

*All paraglider pilots (including paramotor pilots) should read, digest, and take action on the contents of this advisory notice and keep it for future reference until it is superseded or withdrawn by the FSC Chairman. This notice will remain available on the BHPA website.*

## PARAGLIDER LEADING EDGE WEAR.

Incident Reports from pilots and paraglider service centres have highlighted cases where abrasion or wear has been detected in the material over the internal rods that help form the paraglider's leading edge. In some cases, sections of rod have been fully exposed on multiple cells across the span of the leading edge. Repairing this damage can be time-consuming and potentially costly, and should be carried out by an expert or shipped to the manufacturer for repair.

An example of significant wear is illustrated on the photograph below.



Curved leading edge formed by internal rod.

Area of damage: red surface material worn by abrasion, exposing the rod.

This wear may occur if the leading edge is allowed to drag over an abrasive ground surface, for example when inflating your paraglider, or when folding it to pack away. Cobra-style launches can result in damage, particularly if the 'tail' drags across the ground. Abrasion damage may occur more rapidly when launching, landing or packing on a paved surface. Lightweight / hike and fly paragliders (i.e. those made from a lighter weight fabric) that come into contact with abrading ground surfaces may wear at a faster rate and require more care.

The BHPA encourages all its members who fly paragliders and paramotors to:

- 1) Check the condition of the paraglider's leading edge and any other surface which covers internal rods as part of your daily inspection procedure.
  - 2) Choose your packing location carefully and consider using a folding technique that does not involve dragging the top surface material over the ground.
  - 3) If wear is detected, follow the manufacturer's advice in your paraglider user's manual. Consult a paraglider service centre or your paraglider manufacturer for advice on appropriate repairs. In some cases you may be advised not to use the paraglider until repairs have been carried out.
-